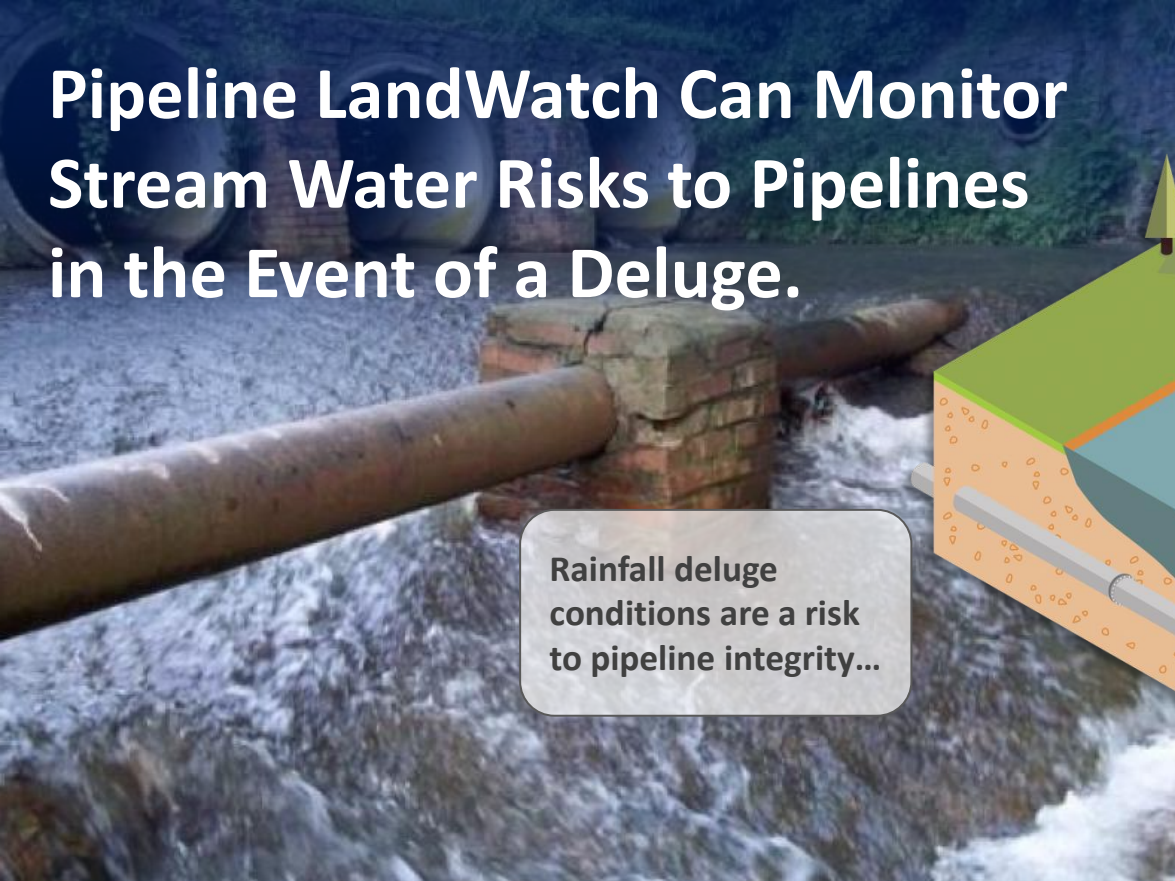


Pipeline LandWatch Can Monitor Stream Water Risks to Pipelines in the Event of a Deluge.



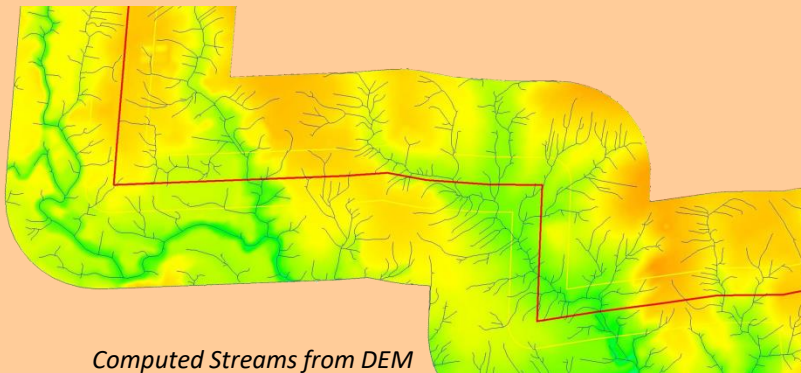
Rainfall deluge conditions are a risk to pipeline integrity...



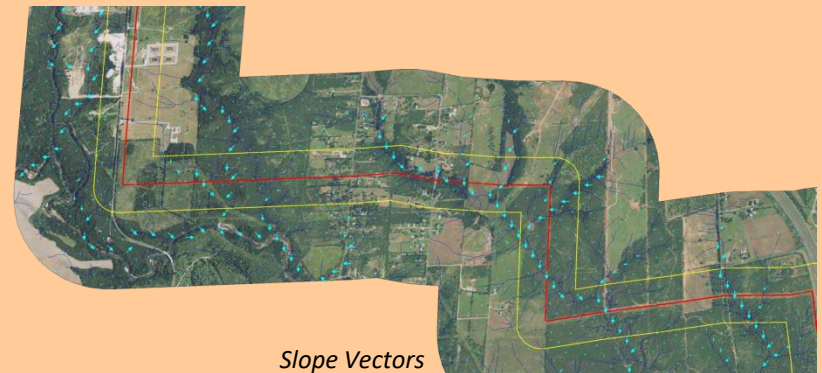
...and, in worst case conditions, can lead to a rupture and a release.

Pipeline LandWatch has the capability of monitoring pipeline Vs stream locations...

...and, by sourcing online gauging data, monitor stream level and velocity threats to your pipeline.



Computed Streams from DEM



Slope Vectors